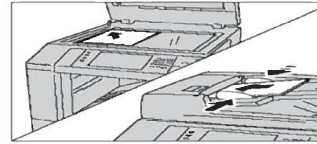


DC/AP-V 3065/3060 , DC-V C2060 Operation Guide



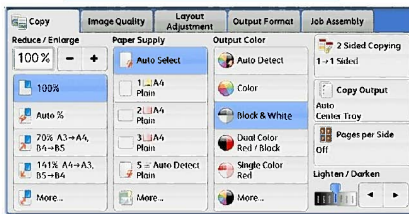
Load document

Place the document face down, and align it against the top left corner of the document glass. Place the document face up in the center of the document feeder.



Service Line
800 820 5146

Copy



Press [service home] button, select [Copy], select each tab, and configure features as necessary, then press [start]

or

Simple Copy



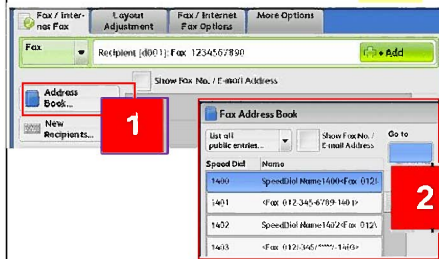
Press [service home] button, select [Simple Copy], select each tab, and configure features as necessary, then press [start].

Fax



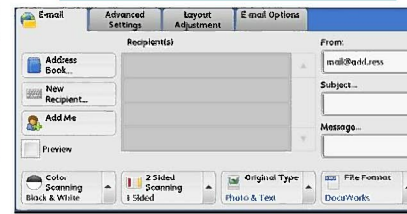
Enter a fax number using the numeric keypad, and configure features as necessary, then press [start]

or

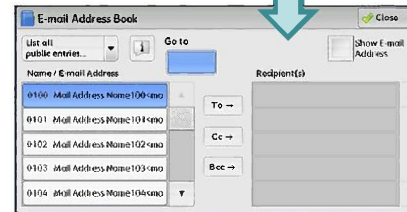


Select [address book], select the item you want to set for a recipient, and select [add], then press start.

Scan to Email

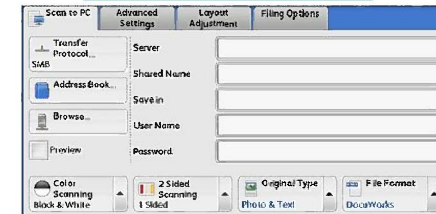


Press [service home] button, select [scan to email], select [address book]

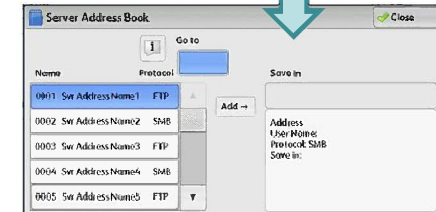


Select a recipient from the address list, and then select [To], [CC] or [Bcc], then press [start].

Scan to PC



Press [service home] button, select [scan to PC], select [address book]



Select the destination to store the data in, select [add], then press [start].