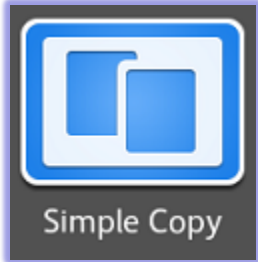


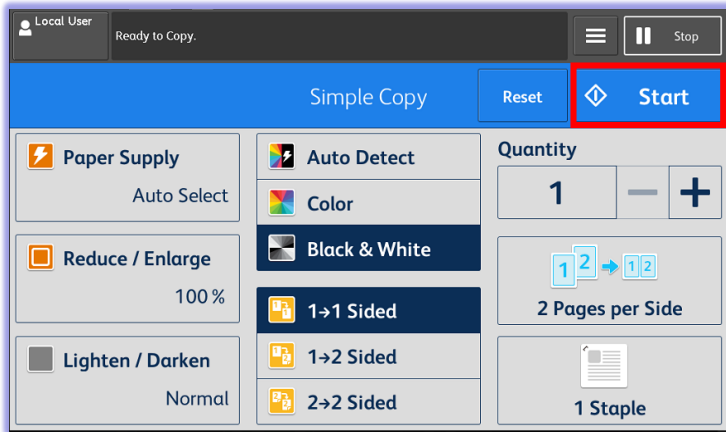
AP-VII C7773/C6673/C5573/C4473/C3373/C3372 DC-VII C4473/C3373/C3372/C2273 Operation Guide



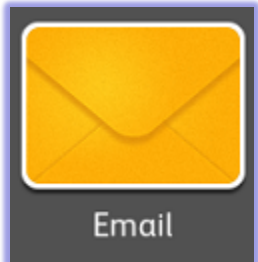
Simple Copy



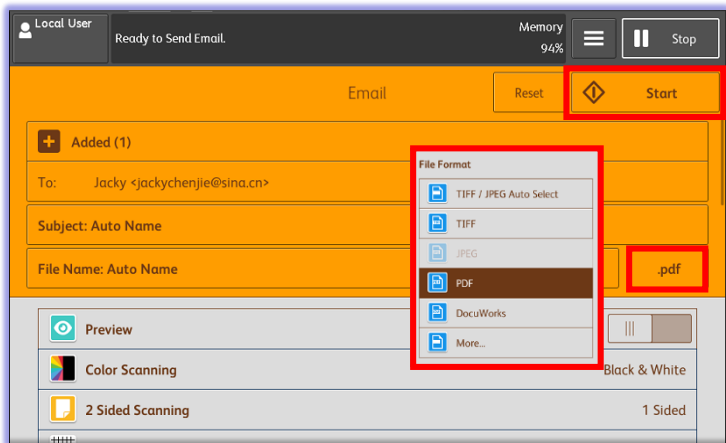
Select features such as [Reduce/Enlarge], [Paper Supply], [Output Color], [2-Sided Copying], and press [Start].



Scan to Email



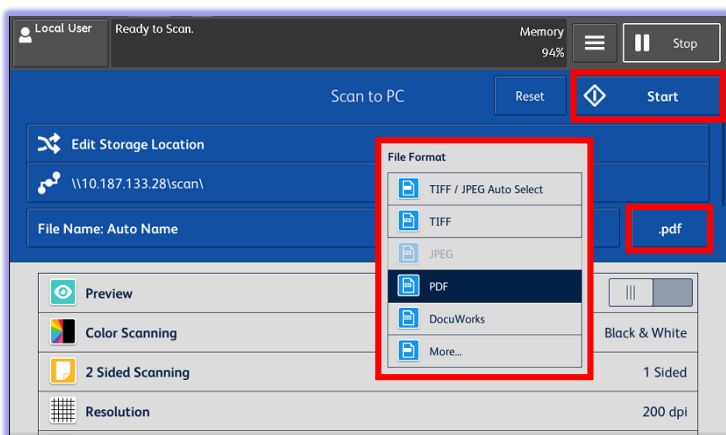
Add recipients, select features as necessary, and press [Start]



Scan to PC

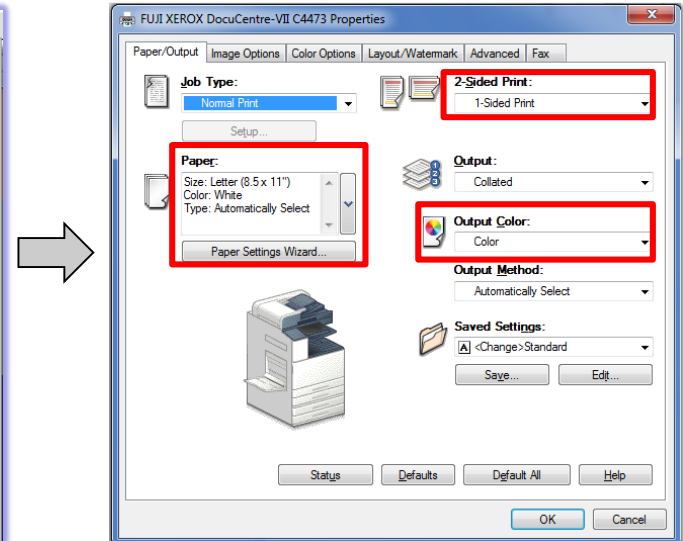
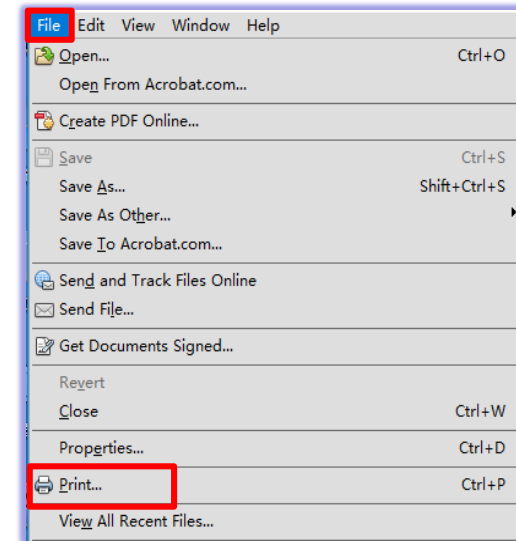


Specify the forwarding destination in Address book, select features as necessary and press [Start]. The scanned document will be sent to the specified destination.



Print

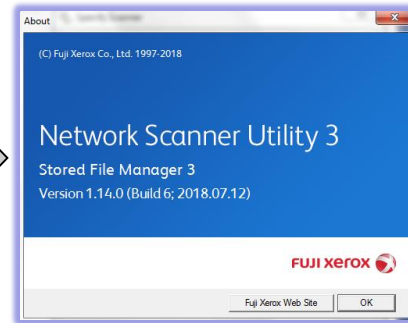
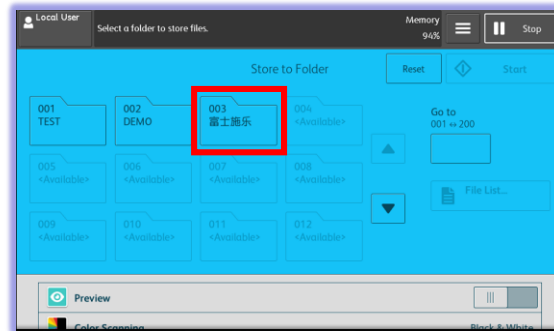
Select [Print], select the required printer and click [Properties] to select the features, and then click [OK].



Store to Folder



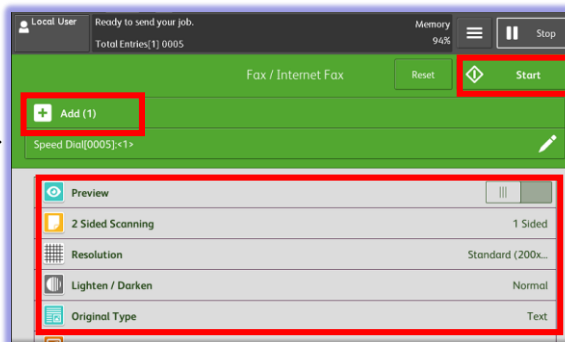
Select a folder to save the scanned data in. Then download the document with the software named Network Scanner Utility 3.



FAX (Option)



Select features as necessary, enter the fax number. To specify multiple recipients, select [+Add], and press [Start].



Service Hotline
800 820 5146