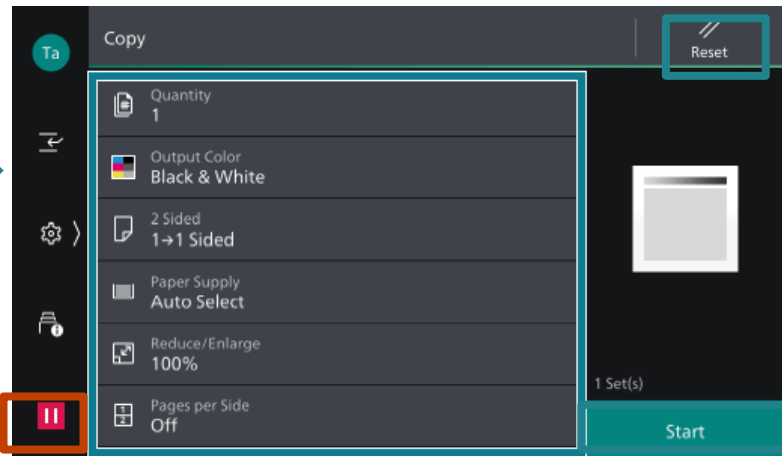
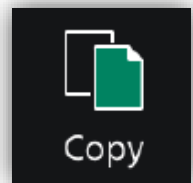


Copy

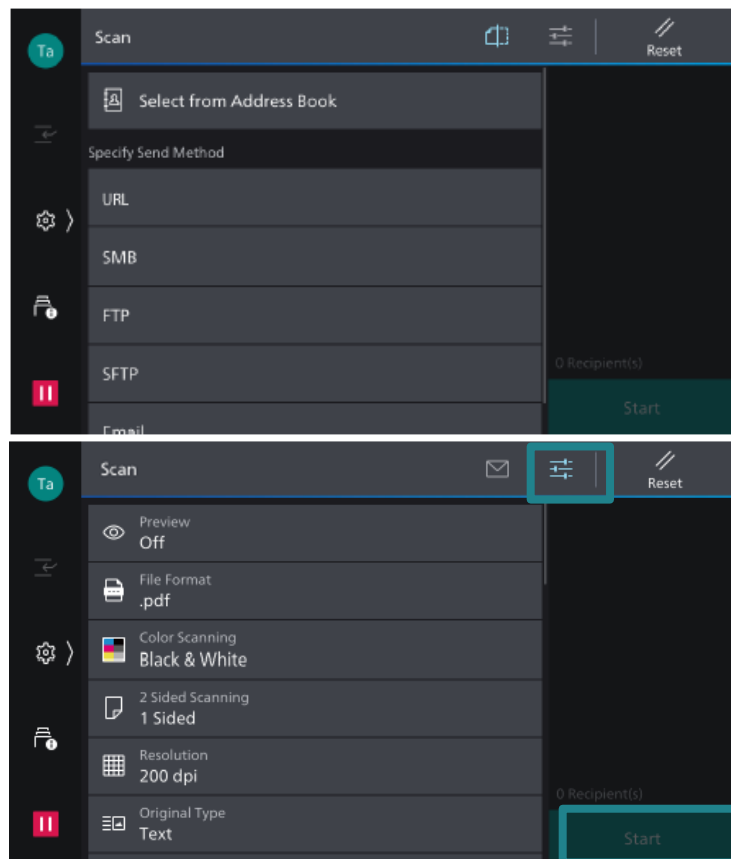
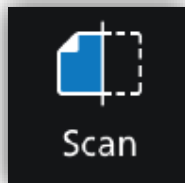
Select feature, configure the quantity, then tap on [Start].

- Deleting: Tap on then tap on [Delete].
- Reset: Tap on [Reset] when turning the setting value to default.



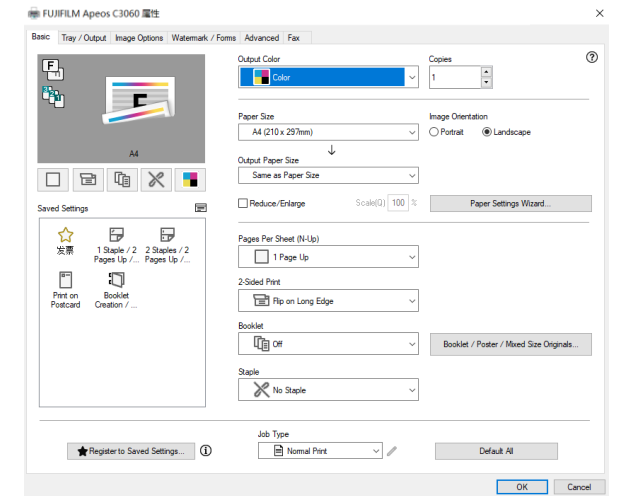
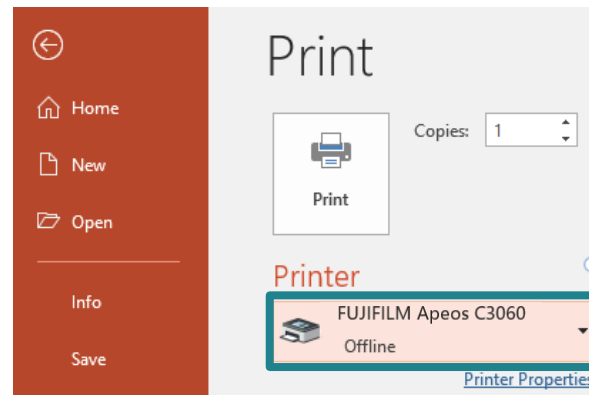
Scan (Email and PC)

1. Select the recipient from address book or select sending method, such as URL, SMB, FTP, SFTP or Email, and set the destination information.
2. Tap on the upper side of the screen, and set the features.
3. Tap on [Start].



Print

Select [Print], select the printer and click [Printer Properties] to select the features, and then click [OK].



Scan to Folder

1. Tap on [Scan to Folder], and select a folder to save the data. Tap on and set each item and tap on [Start].
2. Click the [Start] on the PC, and start up [Stored File Manager 3] from [Network Scanner Utility 3], select the scanner, click [Next] and [Import].

