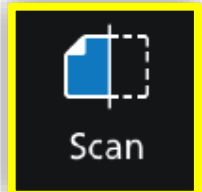
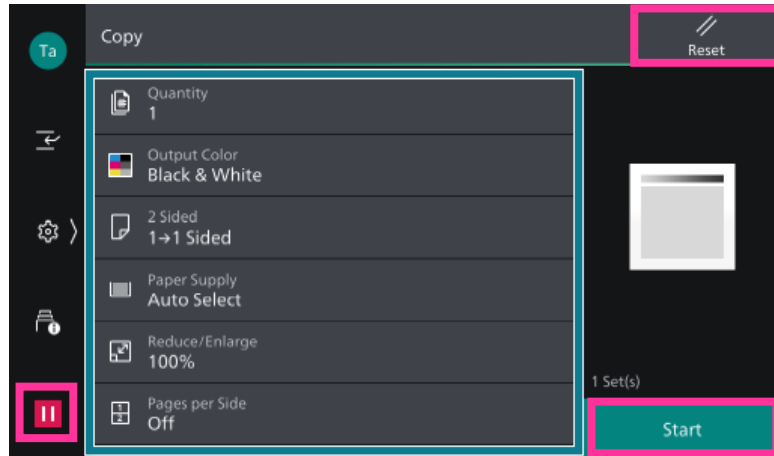




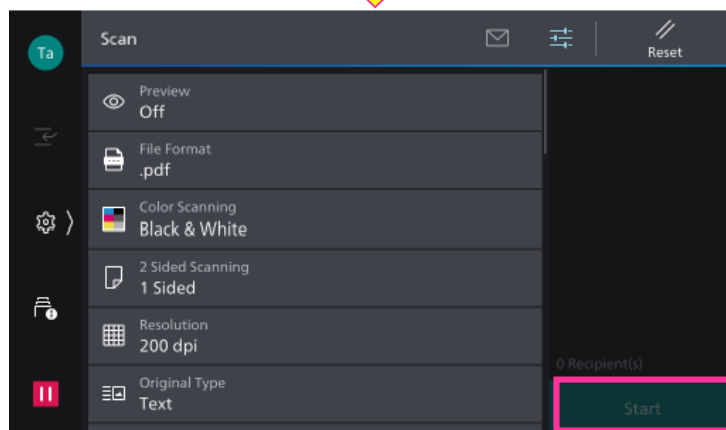
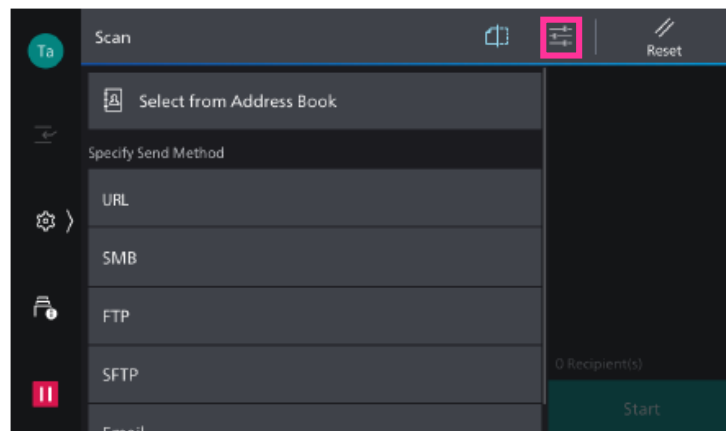
Configure the quantity and the setting items, then tap on [Start].

- Deleting: Tap on or [Pause], then tap on [Delete].
- Reset: Tap on [Reset] when turning the setting value to default.

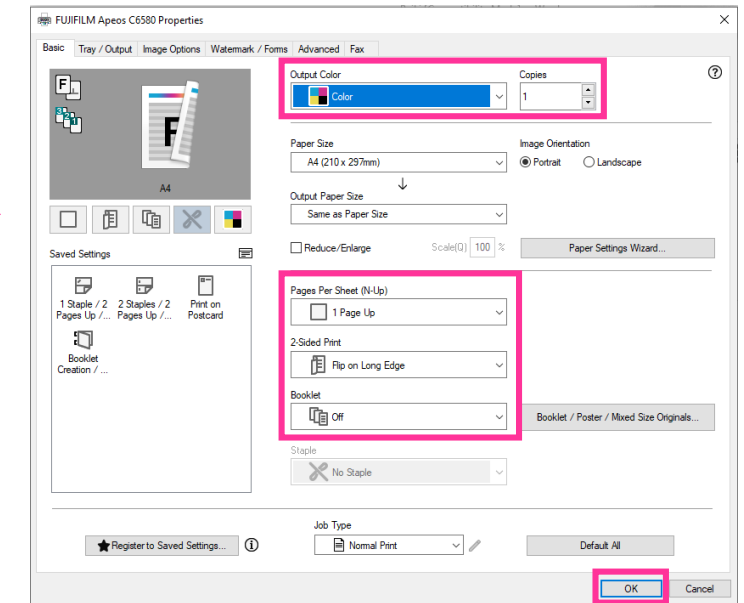
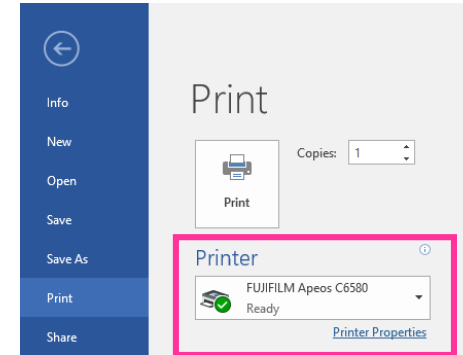


1. Select the recipient from address book or select sending method, such as URL, SMB, FTP, SFTP or Email, and set the destination information.
2. Tap on on the upper side of the screen, and set the features.
3. Tap on [Start].

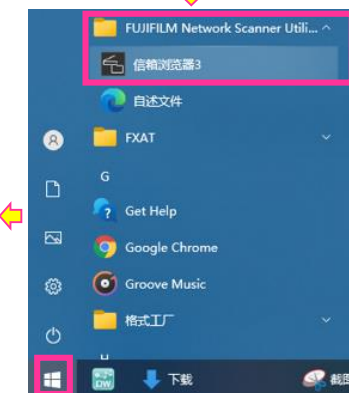
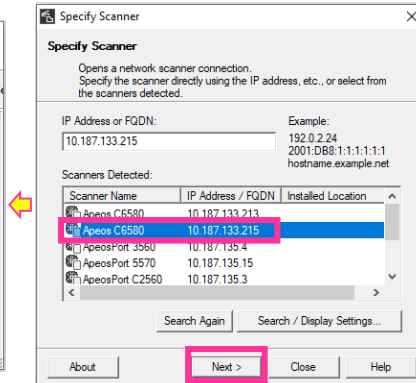
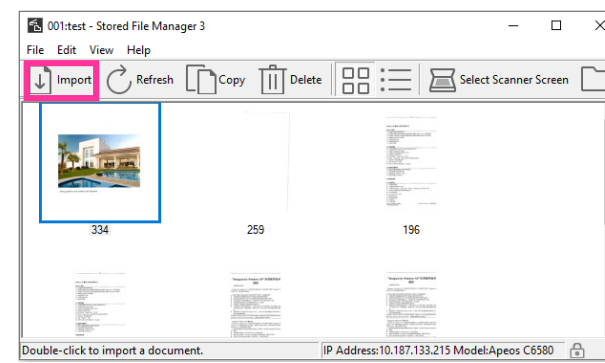
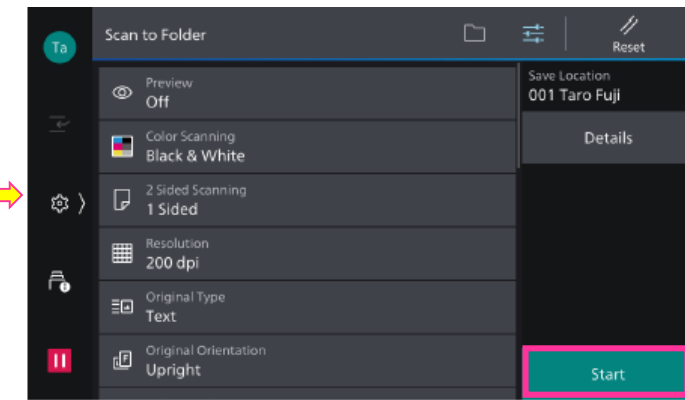
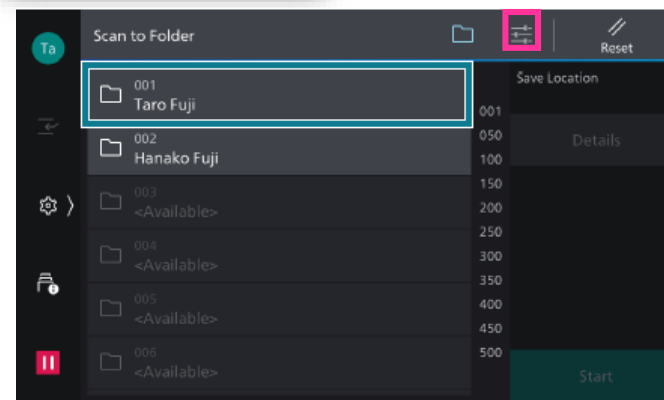
Scan to
URL / Email / PC



Click [Print], select the printer and click [Printer Properties], set the features and print quantity as requested, and then click [OK].



1. Tap on [Scan to Folder], and select a folder to save the data. Tap on and set each item and tap on [Start].
2. Click the [Start] on the PC, and start up [Stored File Manager 3] from [Network Scanner Utility 3], select the scanner, click [Next] and [Import].





本文件包含由Xerox Corporation许可的Fuji Xerox产品。
产品的经销商是FUJIFILM Business Innovation Corp.。