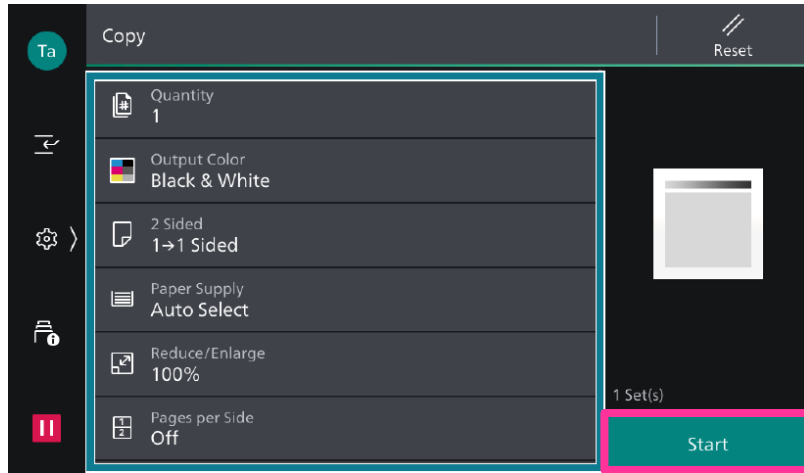


# ApeosPro C810/C750 Operation Guide

Customer Contact Centre  
400 820 5146

## Copy

Tap on [Email]. Select feature as requested, enter the number of copies, then tap on [Start].  
Delete: Tap on [Pause] – [Delete].  
Reset: Tap on [Reset] at the bottom of the Copy screen.

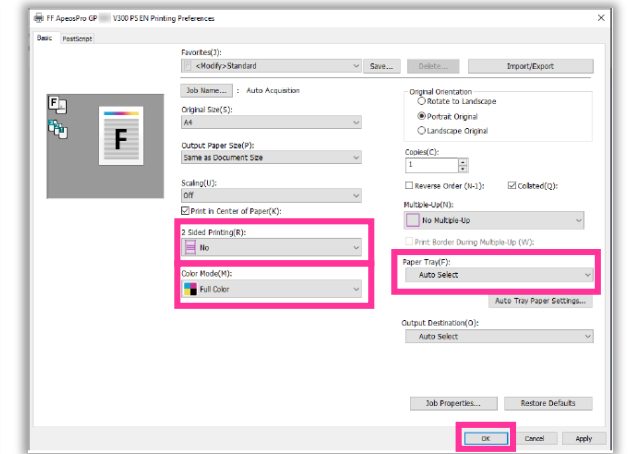
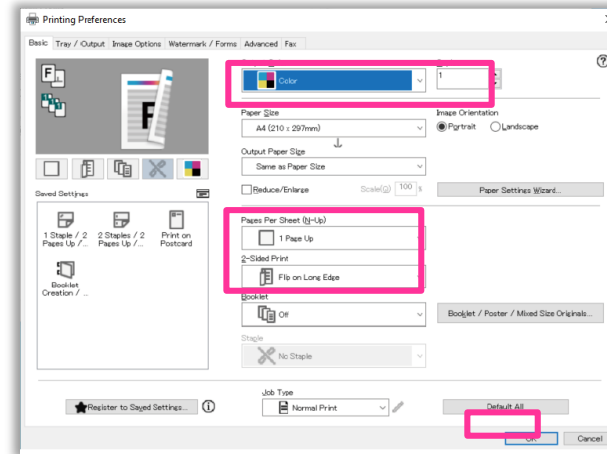


## Print

Select [Print], select the printer and click [Printer Properties] to select the features, and then click [OK].

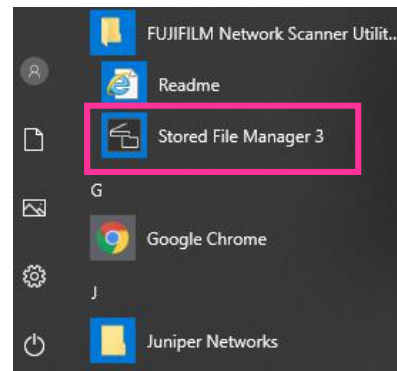
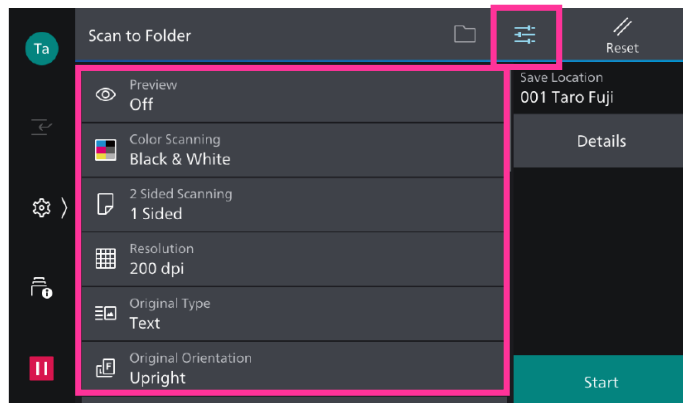
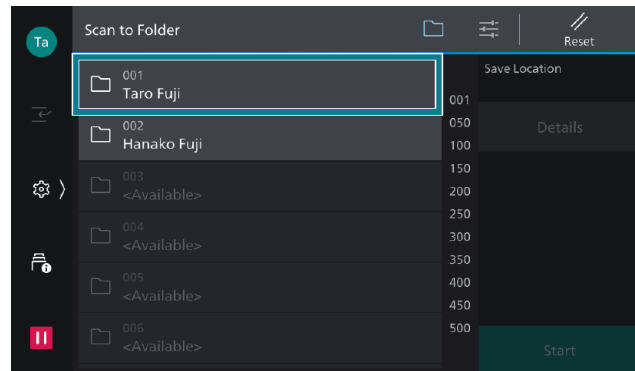
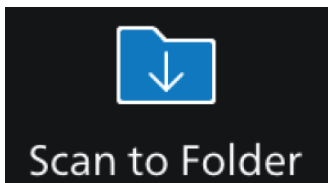
### PCL Drive

### PS Drive



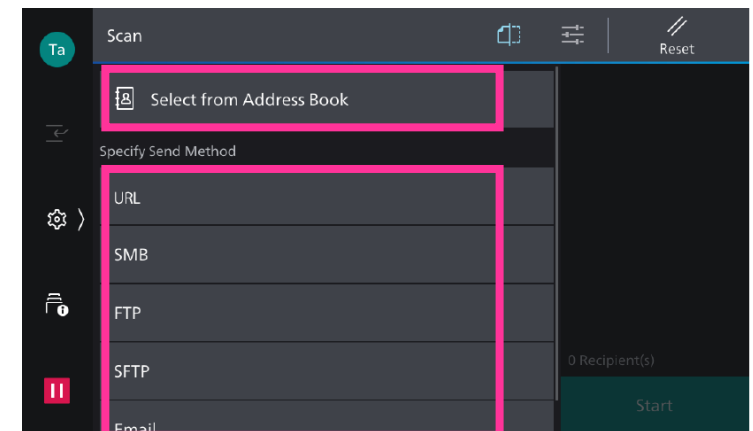
## Scan to Folder

Tap on [Scan to Folder]. Select a folder to save the data, Tap on [Start], and set each item and tap on [Start]. Then download the document with "Network Scanner Utility 3" or IS.



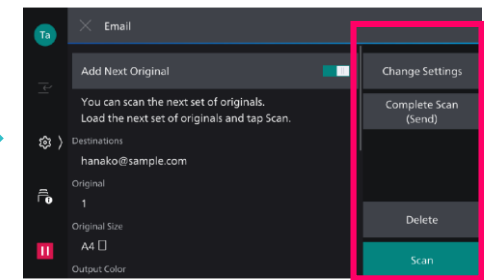
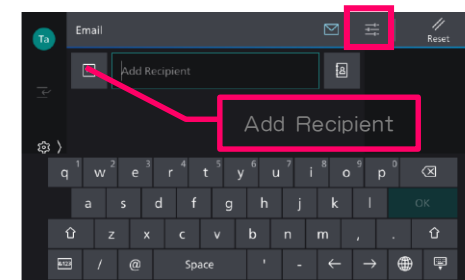
## scan

Tap on [Scan]. Select recipients from Address Book, sets the sending method. Tap on [Start], and set each item and tap on [Start].



## Email

Tap on [Email], Specify the recipient by directly entering using the keyboard or by tapping on the Address Book. Tap on [Start] the upper side of the screen, and set each item. When all the documents have been scanned, tap on [Complete Scan (Send)].





本文件包含由Xerox Corporation许可的Fuji Xerox产品。  
产品的经销商是FUJIFILM Business Innovation Corp.。