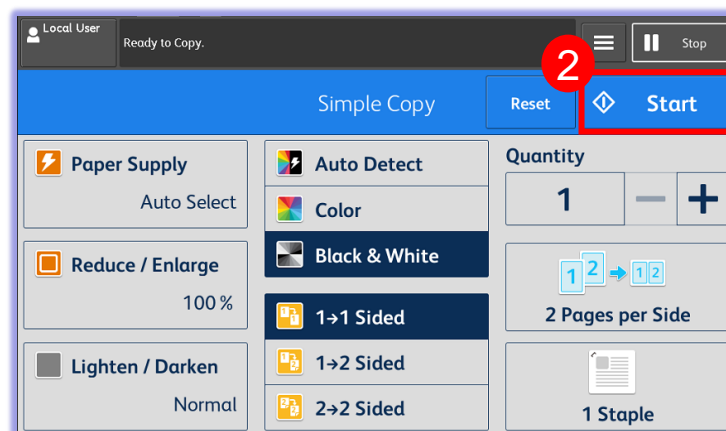
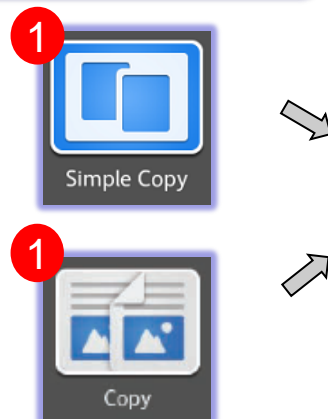


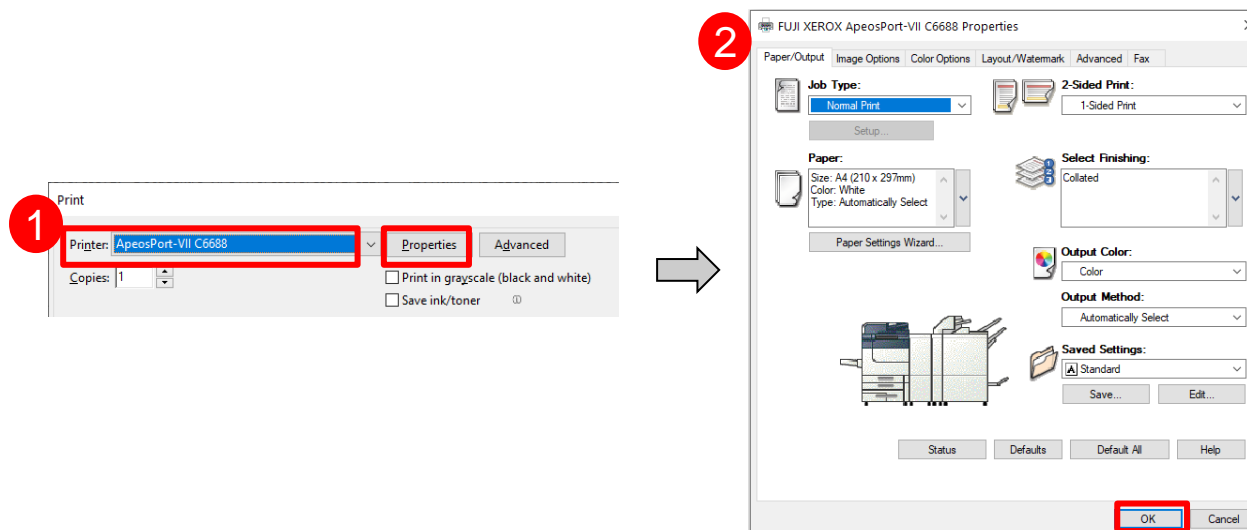
## Copy

Select [Simple Copy] or [Copy], configure feature as requested, enter a quantity, then press [Start].



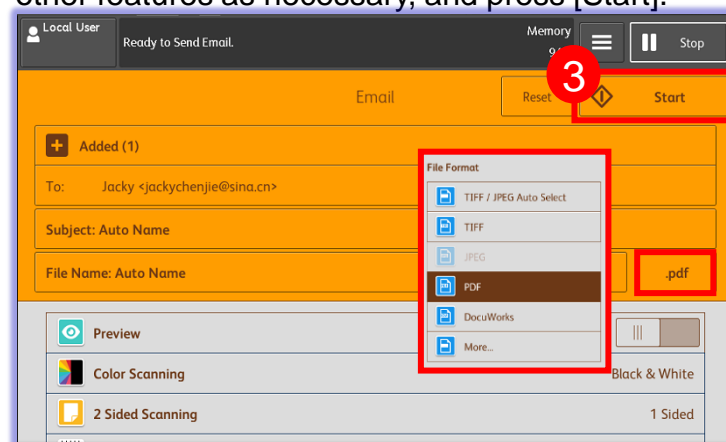
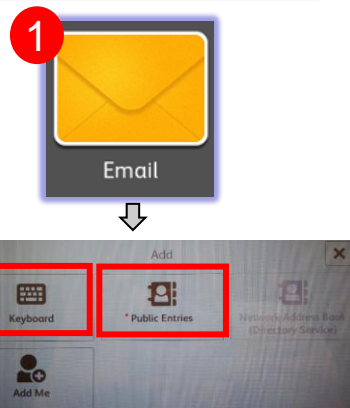
## Print

1. Click [Print], select printer and click [Properties].
2. Select the features, and then click [OK].



## Scan to Email

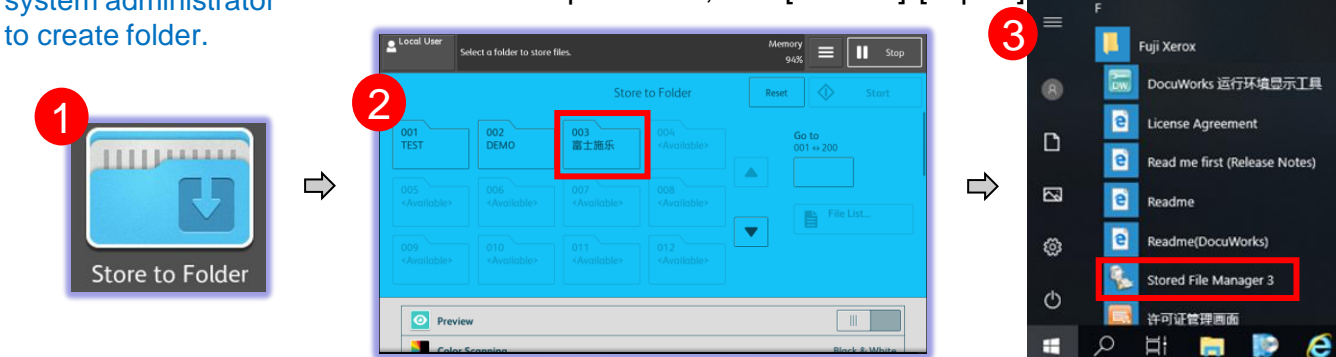
Add recipients, select file format in [.PDF] and other features as necessary, and press [Start].



## Store to Folder

Ps: Pls contact system administrator to create folder.

1. Select a folder to save the scanned data in.
2. Download and install Network Scanner Utility 3 from FUJIFILM Business Innovation website.
3. Open [Stored File Manager 3] in your PC, select printer, then[Next], input folder number and passcode, click[confirm]-[import]



## Scan to PC

Specify the forwarding destination in Address book, select features as necessary and press [Start]. The scanned document will be sent to the specified destination.

